



HE2EV 250V DC 16A-500A EV Fuse

Standard/ 标准: UL 248, GB/T 31465.6, JASO D622, ISO 8820-8

INTERRUPTING CAPACITY / 分断能力:

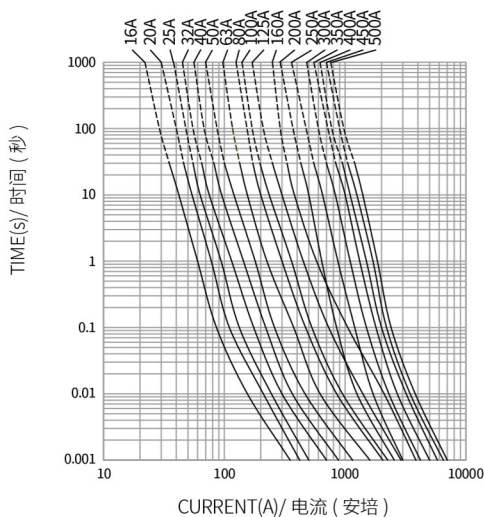
16-160A: 30,000 amperes at 250V DC
180-500A: 50,000 amperes at 250V DC

TECHNICAL PARAMETERS/ 技术参数:

PART NO. 目录编号	CURRENT RATING 额定电流	SAFETY APPROVALS 安全认证	
		cURus	TUV
HE2EV16	16A	○	○
HE2EV20	20A	○	○
HE2EV25	25A	○	○
HE2EV32	32A	○	○
HE2EV40	40A	○	○
HE2EV50	50A	○	○
HE2EV63	63A	○	○
HE2EV80	80A	○	○
HE2EV100	100A	○	○
HE2EV125	125A	○	○
HE2EV160	160A	○	○
HE2EV200	200A	○	○
HE2EV250	250A	○	○
HE2EV300	300A	○	○
HE2EV350	350A	○	○
HE2EV400	400A	○	○
HE2EV450	450A	○	○
HE2EV500	500A	○	○

● DENOTES FOR APPROVAL ● 表示已取得安全认证
○ DENOTES FOR PENDING ○ 表示正在申请安全认证

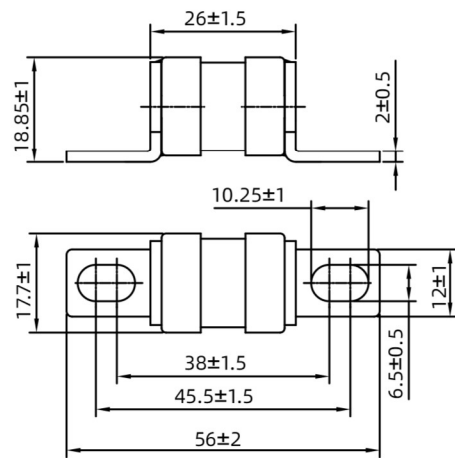
HE2EV 平均 I-T 曲线图 (仅供参考)
HE2EV AVERAGE I-T CHARACTERISTICS CURVE (FOR REFERENCE)



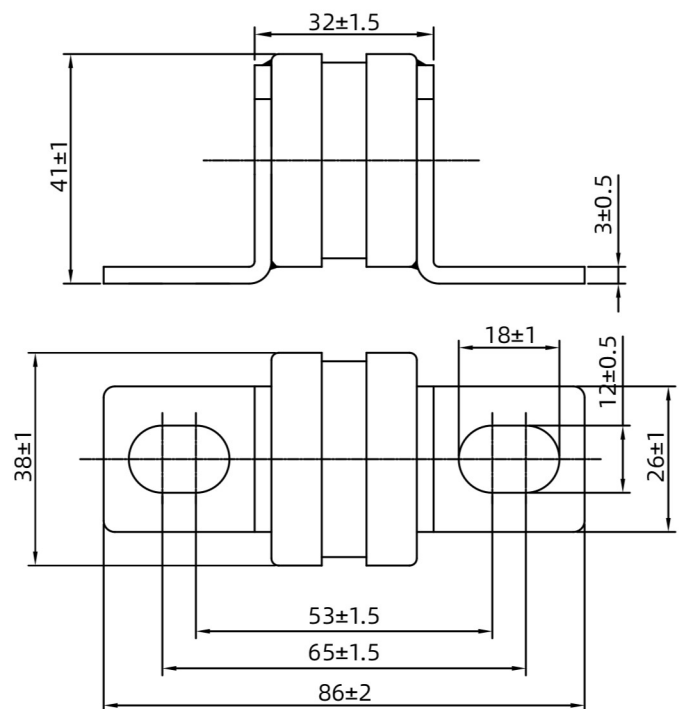
Dimensions/ 尺寸:

Unit 单位: mm

16A-160A Part No.: HE2EV (amp rating)



180A-500A Part No.: HE2EV (amp rating)





HE7EV 750V DC 10A-100A EV Fuse

Standard/ 标准: UL 248, GB/T 31465.6, JASO D622, ISO 8820-8

INTERRUPTING CAPACITY / 分断能力:
50,000 amperes at 750V DC

TECHNICAL PARAMETERS/ 技术参数:

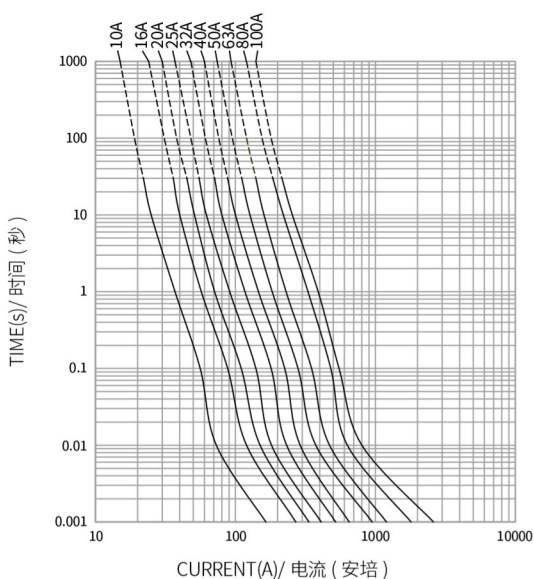
PART NO. 目录编号	CURRENT RATING 额定电流	SAFETY APPROVALS 安全认证	
		cURus	TUV
HE7EV10	10A	○	○
HE7EV16	16A	○	○
HE7EV20	20A	○	○
HE7EV25	25A	○	○
HE7EV32	32A	○	○
HE7EV40	40A	○	○
HE7EV50	50A	○	○
HE7EV63	63A	○	○
HE7EV80	80A	○	○
HE7EV100	100A	○	○

● DENOTES FOR APPROVAL
○ DENOTES FOR PENDING

● 表示已取得安全认证
○ 表示正在申请安全认证

HE7EV 平均 I-T 曲线图 (仅供参考)

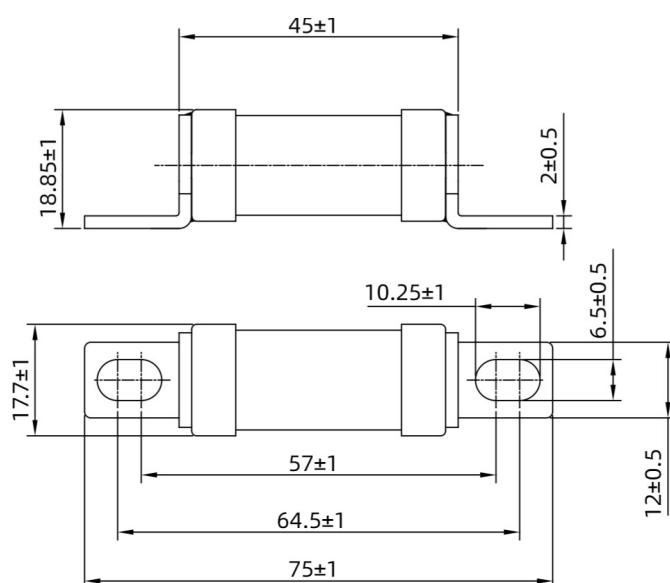
HE7EV AVERAGE I-T CHARACTERISTICS CURVE
(FOR REFERENCE)



Dimensions/ 尺寸:

Unit 单位: mm

Type: HE7EV Part No.: HE7EV (amp rating)





HC105EV 500V DC 10-50A EV Fuse



Standard/ 标准: UL 248-20

Applicable standards/ 环境可靠性适用的相关标准: GB/T 31465.6, ISO 8820-8, JASO D622

INTERRUPTING CAPACITY / 分断能力:

20,000amperes at 500V DC(10-50A)

TECHNICAL PARAMETERS/ 技术参数:

PART NO. 目录编号				CURRENT RATING 额定电流	SAFETY APPROVALS 安全认证
cartridge	bolt-in	bolt down	PCB mount		
105EV10	105EV10B	105EV10T	105EV10P	10A	●
105EV15	105EV15B	105EV15T	105EV15P	15A	●
105EV20	105EV20B	105EV20T	105EV20P	20A	●
105EV25	105EV25B	105EV25T	105EV25P	25A	●
105EV30	105EV30B	105EV30T	105EV30P	30A	●
105EV32	105EV32B	105EV32T	105EV32P	32A	●
105EV35	105EV35B	105EV35T	105EV35P	35A	●
105EV40	105EV40B	105EV40T	105EV40P	40A	●
105EV50	105EV50B	105EV50T	105EV50P	50A	○

● DENOTES FOR APPROVAL

● 表示已取得安全认证

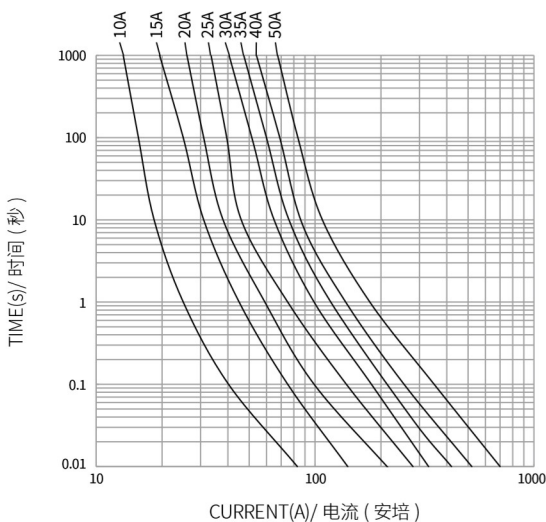
○ DENOTES FOR PENDING

○ 表示正在申请安全认证

测试电流 Tes Current(A)	熔断时间 Fusing Time
1.1 I _R	4 hours Min.
1.35 I _R	150-3600 s
1.5 I _R	10-1000 s
2 I _R	0.5-100 s
3 I _R	0.1-15 s
5 I _R	0.05-1 s

HC105EV 系列 平均 I-T 曲线图 (仅供参考)

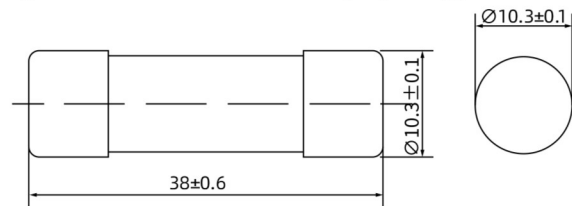
AVERAGE I-T CHARACTERISTICS CURVE (FOR REFERENCE ONLY)



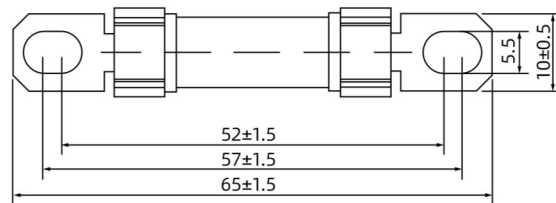
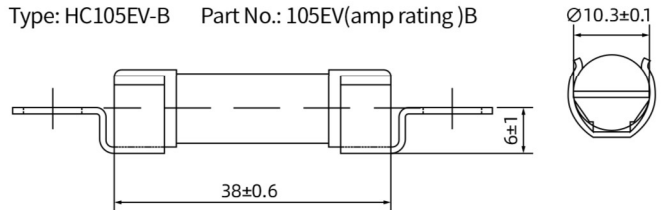
Dimensions/ 尺寸:

Unit 单位: mm

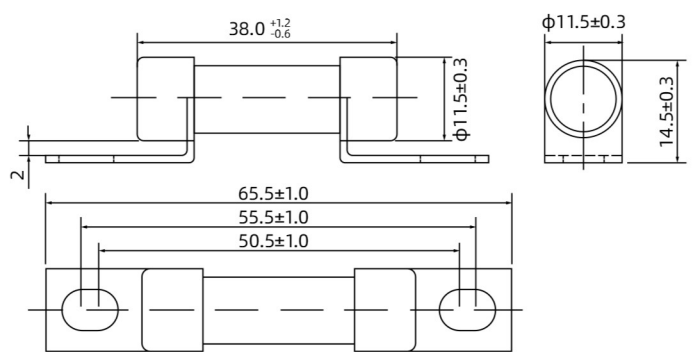
Type: HC105EV Part No.: 105EV(amp rating)



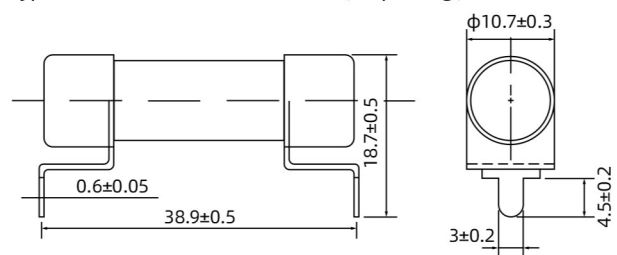
Type: HC105EV-B Part No.: 105EV(amp rating)B



Type: HC105EV-T Part No.: 105EV(amp rating)T



Type: HC105EV-P Part No.: 105EV(amp rating)P





HB5EV 500V DC 50-400A EV Fuse



Standard/ 标准: GB/T 31465.6, ISO 8820-8, JASO D622

Applicable standards/ 环境可靠性适用的相关标准: GB/T 31465.6, ISO 8820-8, JASO D622, UL 248-20

INTERRUPTING CAPACITY / 分断能力:

50,000amperes at 500V DC(50-400A)

TECHNICAL PARAMETERS/ 技术参数:

PART NO. 目录编号	CURRENT RATING 额定电流	SAFETY APPROVALS 安全认证	
		TUV	
HB5EV50	50A	●	
HB5EV60	60A	●	
HB5EV70	70A	●	
HB5EV80	80A	●	
HB5EV90	90A	●	
HB5EV100	100A	●	
HB5EV125	125A	●	
HB5EV150	150A	●	
HB5EV175	175A	●	
HB5EV200	200A	●	
HB5EV225	225A	●	
HB5EV250	250A	●	
HB5EV275	275A	●	
HB5EV300	300A	●	
HB5EV325	325A	●	
HB5EV350	350A	●	
HB5EV400	400A	●	

● DENOTES FOR APPROVAL

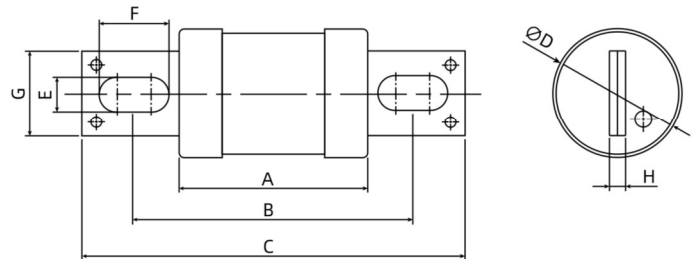
○ DENOTES FOR PENDING

● 表示已取得安全认证

○ 表示正在申请安全认证

Dimensions/ 尺寸:

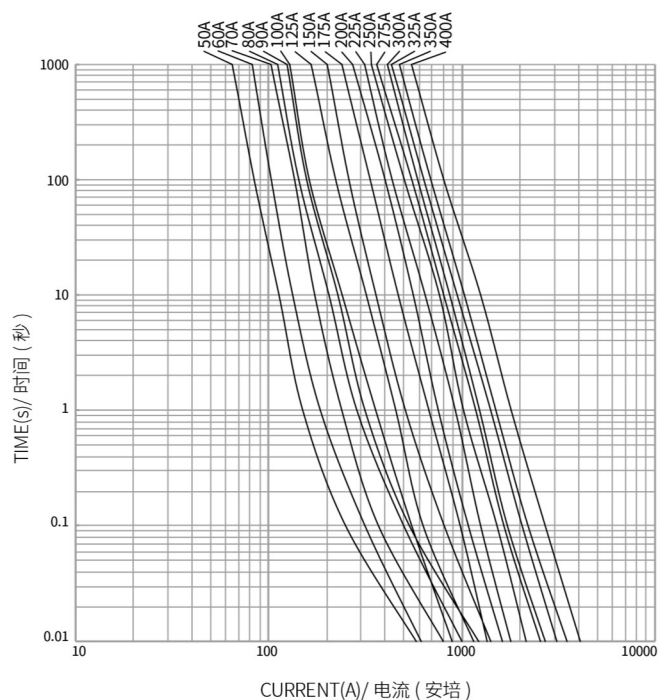
Unit 单位: mm



额定电流 Current Rating	尺寸 Dimensions(mm)							
	A	B	C	D	E	F	G	H
50-250A	54	73	92	31	8.2	10.2	20	4
300-400A	54	80	110	38	10.4	19.9	25	4

HB5EV 系列 平均 I-T 曲线图 (仅供参考)

AVERAGE I-T CHARACTERISTICS CURVE
(FOR REFERENCE ONLY)



测试电流 Test Current(A)	熔断时间 /Fusing Time (s)			
	$I_R < 60A$		$I_R \geq 60A$	
	min.	max.	min.	max.
$1.1 I_R$	14400	-----	14400	-----
$1.35 I_R$	150	3600	150	3600
$1.5 I_R$	10	1000	20	1500
$2 I_R$	0.5	100	1	300
$3 I_R$	0.1	15	0.2	30
$5 I_R$	0.05	1.0	0.05	1.0



HB7EV 750V DC 50-400A EV Fuse



Standard/ 标准: GB/T 31465.6, ISO 8820-8, JASO D622

Applicable standards/ 环境可靠性适用的相关标准: GB/T 31465.6, ISO 8820-8, JASO D622, UL 248-20

INTERRUPTING CAPACITY / 分断能力:

50,000amperes at 750V DC(50-400A)

TECHNICAL PARAMETERS/ 技术参数:

PART NO. 目录编号	CURRENT RATING 额定电流	SAFETY APPROVALS 安全认证	
		TUV	
HB7EV50	50A	●	
HB7EV60	60A	●	
HB7EV70	70A	●	
HB7EV80	80A	●	
HB7EV90	90A	●	
HB7EV100	100A	●	
HB7EV125	125A	●	
HB7EV150	150A	●	
HB7EV175	175A	●	
HB7EV200	200A	●	
HB7EV225	225A	●	
HB7EV250	250A	●	
HB7EV275	275A	●	
HB7EV300	300A	●	
HB7EV325	325A	●	
HB7EV350	350A	●	
HB7EV400	400A	●	

● DENOTES FOR APPROVAL

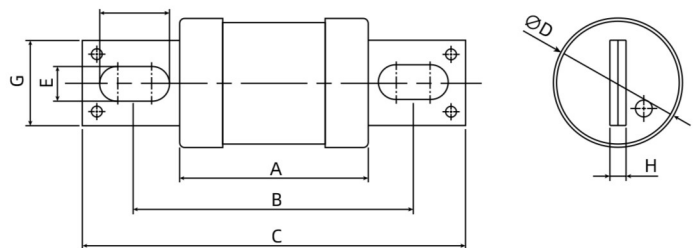
○ DENOTES FOR PENDING

● 表示已取得安全认证

○ 表示正在申请安全认证

Dimensions/ 尺寸:

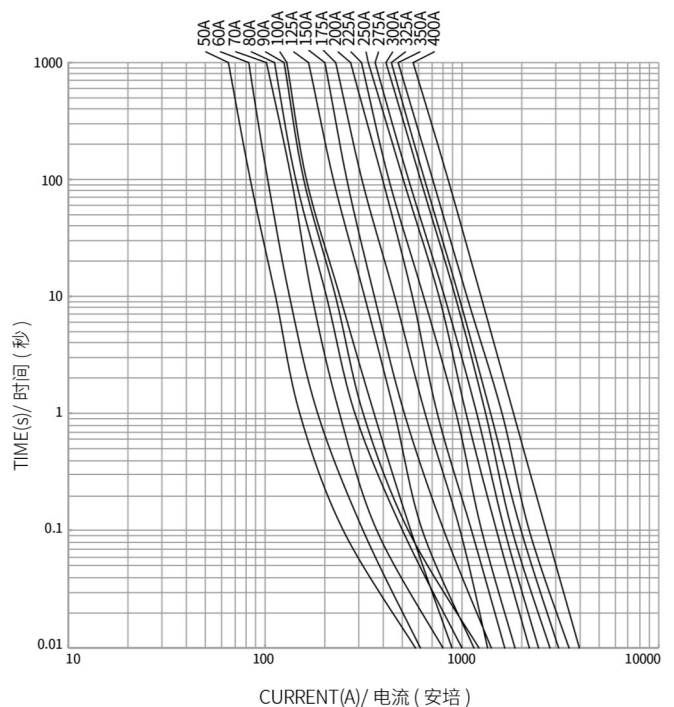
Unit 单位: mm



额定电流 Current Rating	尺寸 Dimensions(mm)							
	A	B	C	D	E	F	G	H
50-250A	54	73	92	31	8.2	10.2	20	4
300-400A	54	80	110	38	10.4	19.9	25	4

HB7EV 系列 平均 I-T 曲线图 (仅供参考)

AVERAGE I-T CHARACTERISTICS CURVE (FOR REFERENCE ONLY)



测试电流 Test Current(A)	熔断时间 /Fusing Time (s)			
	$I_R < 60A$		$I_R \geq 60A$	
	min.	max.	min.	max.
$1.1 I_R$	14400	-----	14400	-----
$1.35 I_R$	150	3600	150	3600
$1.5 I_R$	10	1000	20	1500
$2 I_R$	0.5	100	1	300
$3 I_R$	0.1	15	0.2	30
$5 I_R$	0.05	1.0	0.05	1.0



HBA 70A-400A

Class of operation: aR

保护特性: aR



Standard/ 标准: IEC 60269-4, GB/T 13539.4, UL 248-13

INTERRUPTING CAPACITY / 分断能力:

100,000 amperes at 150V AC

20,000 amperes at 150V DC

TECHNICAL PARAMETERS/ 技术参数:

PART NO. 目录编号	CURRENT RATING 额定电流	SAFETY APPROVALS 安全认证	
		cURus	
HBA70	70A	●	
HBA80	80A	●	
HBA100	100A	●	
HBA125	125A	●	
HBA150	150A	●	
HBA200	200A	●	
HBA250	250A	●	
HBA300	300A	●	
HBA350	350A	●	
HBA400	400A	●	

● DENOTES FOR APPROVAL

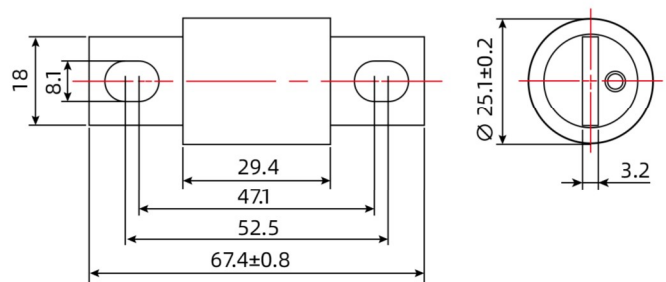
○ DENOTES FOR PENDING

● 表示已取得安全认证

○ 表示正在申请安全认证

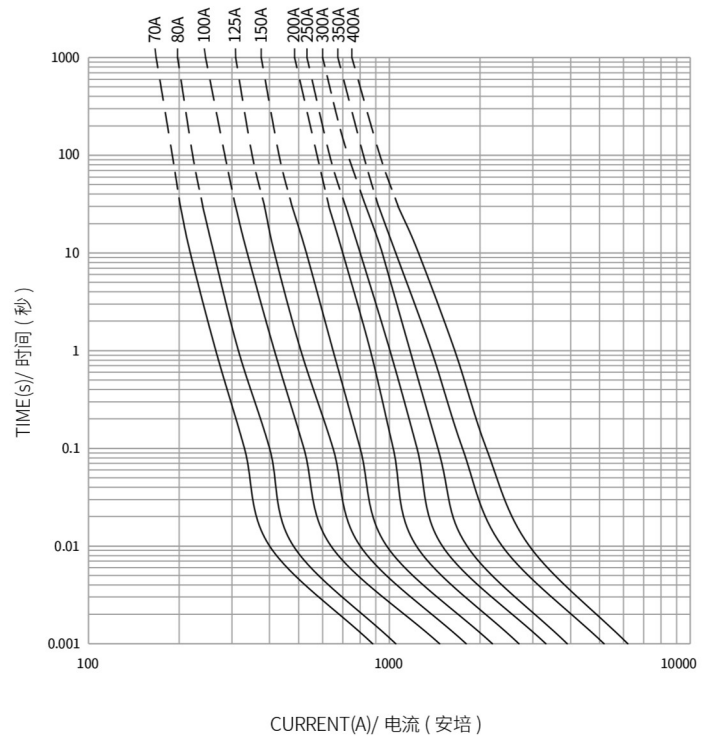
Dimensions/ 尺寸:

Unit 单位: mm



HBA 平均 I-T 曲线图 (仅供参考)

AVERAGE I-T CHARACTERISTICS CURVE
(FOR REFERENCE ONLY)





HBC 35A-1200A

Class of Operation: aR
保护特性: aR



Standard/ 标准: IEC 60269-4, GB/T 13539.4, UL 248-13

INTERRUPTING CAPACITY / 分断能力:
200,000 amperes at 500V AC (35A-1200A)
50,000 amperes at 500V DC (35A-1200A)

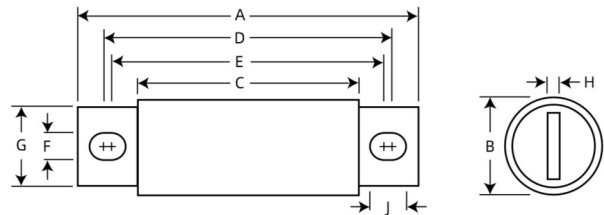
TECHNICAL PARAMETERS/ 技术参数:

PART NO. 目录编号	CURRENT RATING 额定电流	SAFETY APPROVALS 安全认证	
		cURus	
HBC35	35A	○	○
HBC40	40A	○	○
HBC45	45A	○	○
HBC50	50A	○	○
HBC60	60A	○	○
HBC70	70A	○	○
HBC80	80A	○	○
HBC90	90A	○	○
HBC100	100A	○	○
HBC125	125A	○	○
HBC150	150A	○	○
HBC175	175A	○	○
HBC200	200A	○	○
HBC225	225A	●	●
HBC250	250A	●	●
HBC275	275A	●	●
HBC300	300A	●	●
HBC325	325A	●	●
HBC350	350A	●	●
HBC400	400A	●	●
HBC450	450A	●	●
HBC500	500A	●	●
HBC600	600A	●	●
HBC700	700A	○	○
HBC800	800A	○	○
HBC1000	1000A	○	○
HBC1200	1200A	○	○

● DENOTES FOR APPROVAL ● 表示已取得安全认证
○ DENOTES FOR PENDING ○ 表示正在申请安全认证

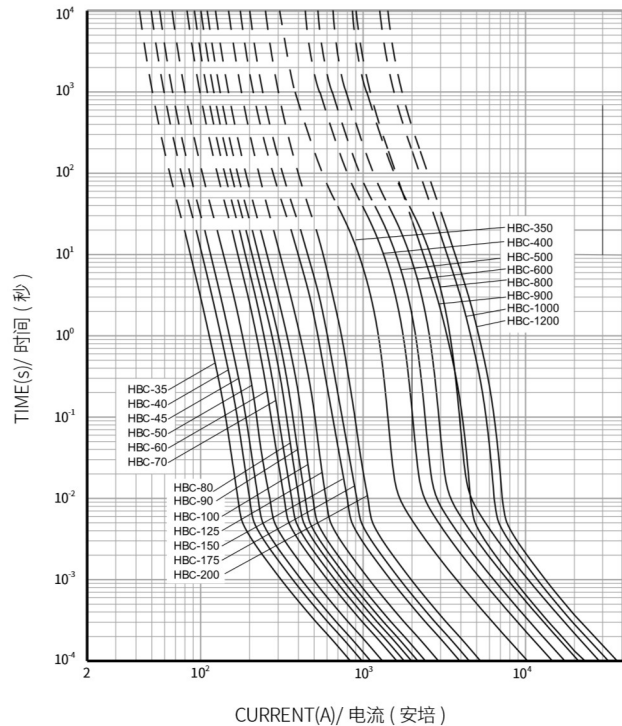
Dimensions/ 尺寸:

Unit 单位: mm



HBC 平均 I-T 曲线图 (仅供参考)

AVERAGE I-T CHARACTERISTICS CURVE
(FOR REFERENCE ONLY)



CATALOG NUMBER	A	B	C	D	E	F	G	H	J
HBC35 to 100	92	25.1	54	77	71.6	8.2	18	3.2	10.8
HBC125 to 200	92	31	54	75.6	72	8.6	24	4.8	10.4
HBC225 to 400	110	38	54	88	74.4	10.4	25.4	6.4	17.2
HBC450 to 600	110	50.8	54	90	74.4	10.4	38	6.4	18.2
HBC700 to 800	161	63.5	54	126.2	87.8	13.5	50	9.6	32.7
HBC1000 to 1200	177	76.2	82	137.8	112.4	15.8	60	11	28.5



HBD 35A-600A

Class of Operation: aR
保护特性: aR

Standard/ 标准: IEC 60269-4, GB/T 13539.4, UL 248-13

INTERRUPTING CAPACITY / 分断能力:
200,000 amperes at 700V AC (35A-600A)
50,000 amperes at 700V DC (35A-600A)

TECHNICAL PARAMETERS/ 技术参数:

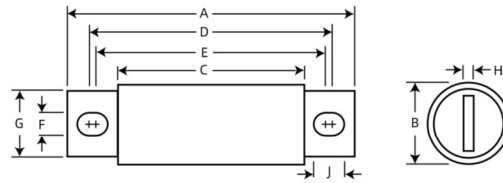
PART NO. 目录编号	CURRENT RATING 额定电流	SAFETY APPROVALS 安全认证	
		cURus	
HBD35	35A	○	
HBD40	40A	○	
HBD50	50A	○	
HBD60	60A	○	
HBD70	70A	○	
HBD80	80A	○	
HBD90	90A	○	
HBD100	100A	○	
HBD125	125A	○	
HBD150	150A	○	
HBD175	175A	○	
HBD200	200A	○	
HBD225	225A	○	
HBD250	250A	○	
HBD300	300A	○	
HBD350	350A	○	
HBD400	400A	○	
HBD450	450A	○	
HBD500	500A	○	
HBD600	600A	○	

● DENOTES FOR APPROVAL
○ DENOTES FOR PENDING

● 表示已取得安全认证
○ 表示正在申请安全认证

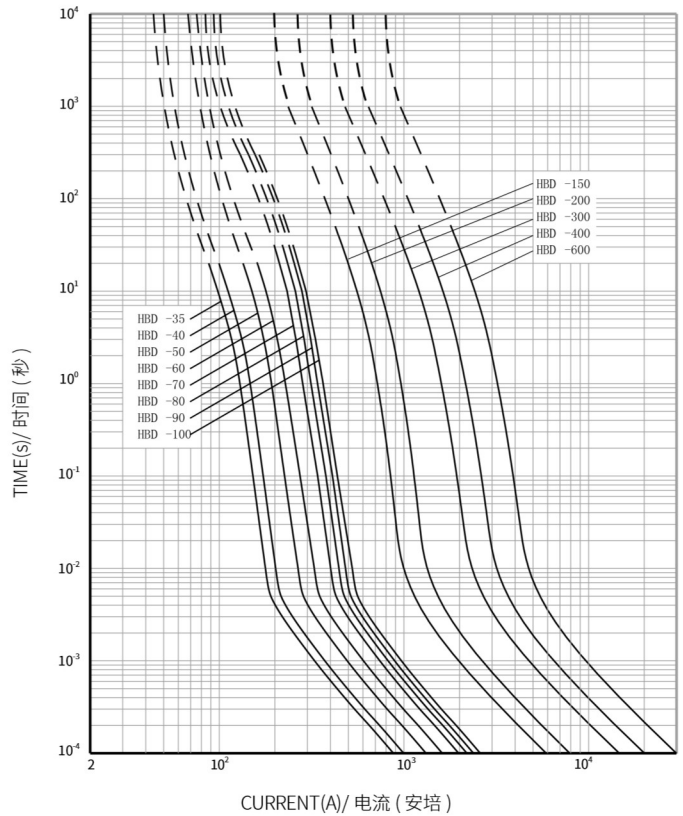
Dimensions/ 尺寸:

Unit 单位: mm



HBD 平均 I-T 曲线图 (仅供参考)

AVERAGE I-T CHARACTERISTICS CURVE
(FOR REFERENCE ONLY)



CATALOG NUMBER	A	B	C	D	E	F	G	H	J
HBD35 to 60	109	25.1	71	94	88.6	8.2	18	3.2	10.8
HBD70 to 100	109	31	71	92.6	89	8.6	24	4.8	12.4
HBD125 to 200	127	38	71	105	91.4	10.4	25.4	6.4	17.2
HBD225 to 400	127	50.8	71	107	91.4	10.4	38	6.4	18.2
HBD450 to 600	178	63.5	71	143.2	104.8	13.5	50	9.6	32.7



HBE 35A-800A

Class of Operation: aR

保护特性: aR



Standard/ 标准: IEC 60269-4, GB/T 13539.4, UL 248-13

INTERRUPTING CAPACITY / 分断能力:

100,000 amperes at 1000V AC (35A-800A)

50,000 amperes at 750V DC (35A-800A)

TECHNICAL PARAMETERS/ 技术参数:

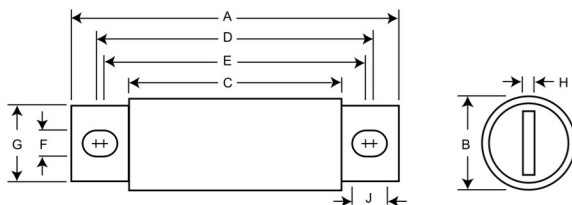
PART NO. 目录编号	CURRENT RATING 额定电流	SAFETY APPROVALS 安全认证
		cURus
HBE35	35A	○
HBE40	40A	○
HBE50	50A	○
HBE60	60A	○
HBE70	70A	●
HBE80	80A	●
HBE90	90A	●
HBE100	100A	●
HBE125	125A	●
HBE150	150A	●
HBE175	175A	●
HBE200	200A	●
HBE225	225A	●
HBE250	250A	●
HBE300	300A	●
HBE350	350A	●
HBE400	400A	●
HBE500	500A	○
HBE600	600A	○
HBE650	650A	○
HBE700	700A	○
HBE800	800A	○

● DENOTES FOR APPROVAL
○ DENOTES FOR PENDING

● 表示已取得安全认证
○ 表示正在申请安全认证

Dimensions/ 尺寸:

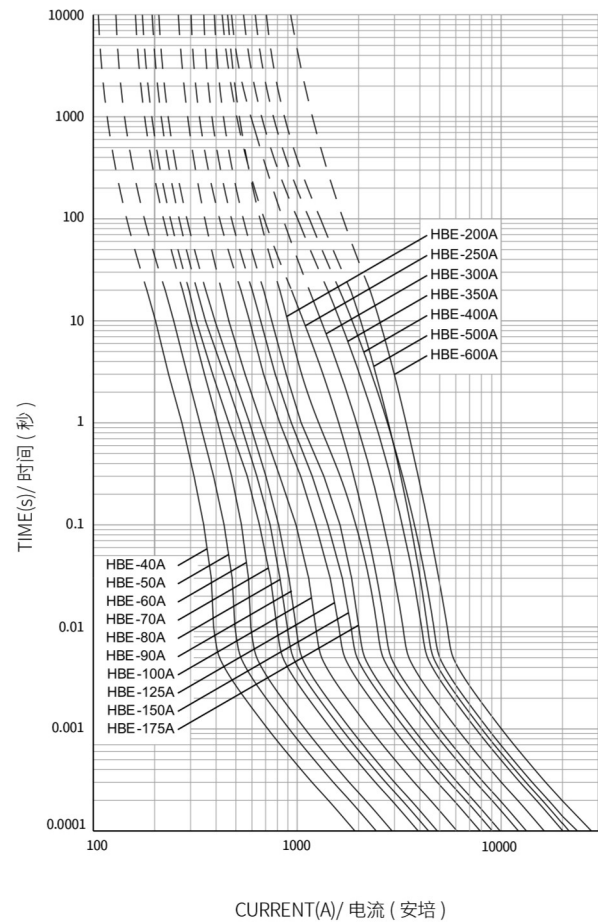
Unit 单位: mm



CATALOG NUMBER	A	B	C	D	E	F	G	H	J
HBE35 to 60	125	25.4	87	110	104.6	8.2	18	3.2	10.8
HBE70 to 100	125	31	87	108.6	105	8.6	24	4.8	10.4
HBE125 to 200	143	38	87	121	107.4	10.4	25.4	6.4	17.2
HBE225 to 400	143	50.8	87	123	107.4	10.4	38	6.4	18.2
HBE450 to 800	187	63.5	87	152	120.8	13.5	50	9.5	29.1

HBE 平均 I-T 曲线图 (仅供参考)

AVERAGE I-T CHARACTERISTICS CURVE
(FOR REFERENCE ONLY)





HEA 6A-400A

Class of Operation: aR

保护特性: aR



Standard/ 标准: IEC 60269-4, GB/T 13539.4, UL 248-13

INTERRUPTING CAPACITY / 分断能力:

80,000 amperes at 690V AC (6A-400A)

50,000 amperes at 500V DC (6A-400A)

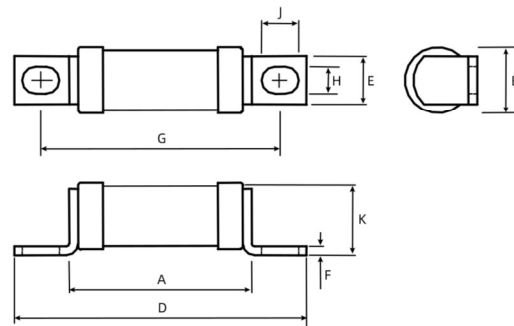
TECHNICAL PARAMETERS/ 技术参数:

PART NO. 目录编号	CURRENT RATING 额定电流	SAFETY APPROVALS 安全认证	
		CCC	cURus
HEA6	6A	●	●
HEA10	10A	●	●
HEA12	12A	●	●
HEA16	16A	●	●
HEA20	20A	●	●
HEA25	25A	●	●
HEA32	32A	●	●
HEA35	35A	●	●
HEA40	40A	●	●
HEA45	45A	●	●
HEA50	50A	●	●
HEA63	63A	●	●
HEA80	80A	●	●
HEA90	90A	●	●
HEA100	100A	●	●
HEA125	125A	●	○
HEA160	160A	●	○
HEA180	180A	●	○
HEA200	200A	●	○
HEA225	225A	●	●
HEA250	250A	●	●
HEA280	280A	●	●
HEA315	315A	●	●
HEA350	350A	●	●
HEA400	400A	●	●

● DENOTES FOR APPROVAL ● 表示已取得安全认证
○ DENOTES FOR PENDING ○ 表示正在申请安全认证

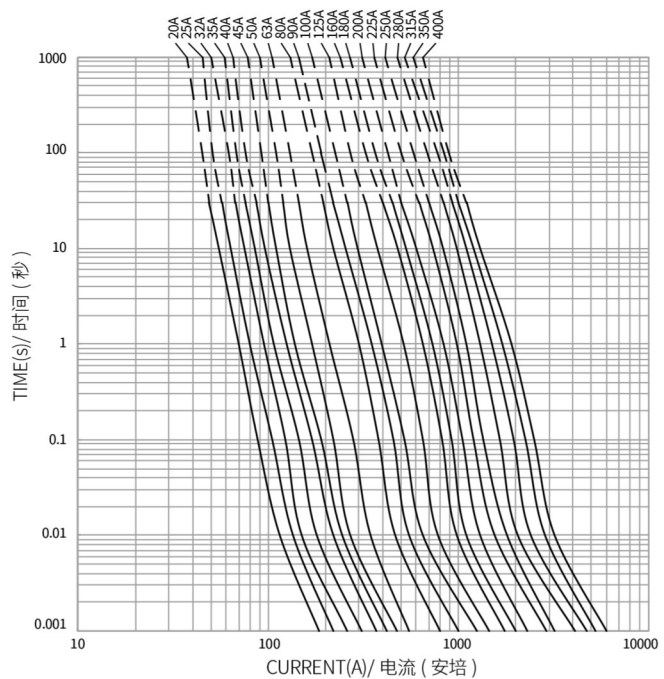
Dimensions/ 尺寸:

Unit 单位: mm



HEA 平均 I-T 曲线图 (仅供参考)

AVERAGE I-T CHARACTERISTICS CURVE
(FOR REFERENCE ONLY)



CURRENT RATING	A	B	D	E	F	G	H	J	K
6A to 100A	44.5	18.0	75.5	12.0	2.0	60	6.3	10.25	19.0
125A to 200A	50.5	27.0	90.5	20	3.0	70.5	9.0	11.0	28.0
225A to 400A	58	38.0	112	26.0	3.0	84.5	12.0	18.0	41.0