

F

E

D

C

B

A

F

E

D

C

B

A

REV.	LOCAS.	DESCRIPTION	DATE	DRAWN
01	NEW	BATCH PRODUCTION INITIAL RELEASE.	2014.03.17	zongliangliu
02		revise the drawing based on the reality	2014.05.06	SHEN
03		According to the actual requirement to update the latest specification	2014.10.07	楊 濤
04		依業務要求增加電鍍碼	2015.12.15	馮國東

Specifications

Current Rating:0.8Amp

Insulation Resistance:1000MΩ Min.

Dielectric Withstanding Voltage:500VAC

Contact Resistance:30mΩ Max.

Operating Temperature:-55°C to +125°C

Materials

Contact Material:Phosphor Bronze

Insulator Material:High Temperature Thermoplastic, UL 94V-0 LCP

or the equivalent material

Colour:Black

All materials must meet Greenconn hazardous substances control standard.

PIN NO.	A	B	C	D	E
2*06	6.35	10.77	12.70	9.37	8.37
2*13	15.24	19.66	21.59	18.26	17.26
2*25	30.48	34.90	36.83	33.50	32.50
2*34	41.91	46.33	48.26	44.93	43.93
2*40	49.53	53.95	55.88	52.55	51.55

Pin No.	Dim.F
≤ 25pin	0.12
> 25pin	0.15

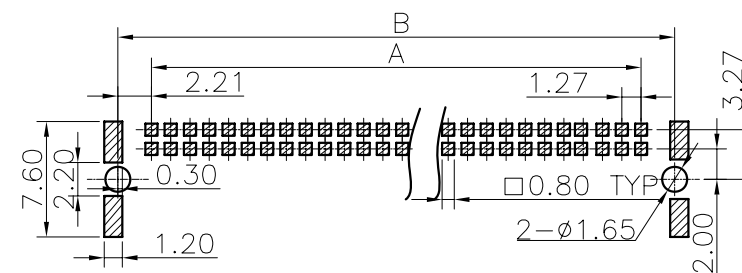
Ordering Information

CBED201 - XX XX B 001 C 1 A X

No. of Pins per Row
06,13,25,34,40

Standard Plating
79=5u"Au/80~160u"Matte Tin
77=15u"Gold/Matte Tin
78=30u"Gold/Matte Tin

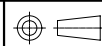
Standard Packing
D=Tape&Reel



Recommended P.C.Board
Layout
(Tolerance:±0.05)

格稜股份有限公司
Greenconn Corporation

REV.	UNIT.	SCALE.	PAGE.
04	mm	2:1	1/1



GENERAL TOLERANCE	
X.*±5.0°	X.±0.30
.X*±3.0°	.X±0.25
.XX*±2.0°	.XX±0.15
.XXX*±1.0°	.XXX±0.10

DESIGNED: 馮國東	DATE: 2015.12.15
CHECKED: 曹 熙	DATE: 2015.12.15
CO SIGNED: 劉北平	DATE: 2015.12.15
APPROVED: 李 輝	DATE: 2015.12.15

DWG. NO.
CBED201-CB1CA
PART NO.
CBED201-XX XX B001C1AX

TITLE.
Pitch1.27 Female Connector
SMC 90° TYPE-Q SMT TYPE