

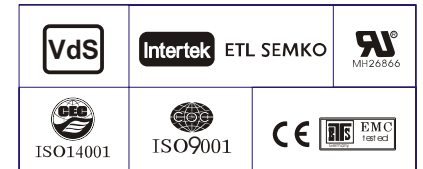
### Specification

Nominal Voltage	2V	
Nominal Capacity(10HR)	250.0AH	
Dimension	Length	170±2mm (6.69 inches)
	Width	110±2mm (4.33 inches)
	Container Height	328±2mm (12.91 inches)
	Total Height (with Terminal)	350±2mm (13.78 inches)
Approx Weight	Approx 14.9 Kg (31.97lbs)	
Terminal	T11	
Container Material	ABS	
Rated Capacity	266.0 AH/13.3A	(20hr, 1.80V/cell, 25°C/77°F)
	250.0 AH/25.0A	(10hr, 1.80V/cell, 25°C/77°F)
	222.0 AH/44.4A	(5hr, 1.75V/cell, 25°C/77°F)
	192.9 AH/64.3A	(3hr, 1.75V/cell, 25°C/77°F)
	150.2 AH/150.2A	(1hr, 1.60V/cell, 25°C/77°F)
Max. Discharge Current	2000A (5s)	
Internal Resistance	Approx 1.0mΩ	
Operating Temp. Range	Discharge : -15~50°C (5~122°F)	
	Charge : 0~40°C (32~104°F)	
	Storage : -15~40°C (5~104°F)	
Nominal Operating Temp. Range	25±3°C (77±5°F)	
Cycle Use	Initial Charging Current less than 75.0A. Voltage 2.4V~2.5V at 25°C(77°F)Temp. Coefficient -5mV/°C	
	Standby Use No limit on Initial Charging Current Voltage 2.25V~2.3V at 25°C(77°F)Temp. Coefficient -3mV/°C	
Capacity affected by Temperature	40°C (104°F)	103%
	25°C (77°F)	100%
	0°C (32°F)	86%
Self Discharge	Leoch LPL series batteries may be stored for up to 6 months at 25°C(77°F) and then a freshening charge is required. For higher temperatures the time interval will be shorter.	



### Applications

- ◆ Tele-communication central station (wired or cellular)
- ◆ Power system communication, military communication, etc.
- ◆ Network communication including: data transmission, television signal transmission, etc.
- ◆ Uninterruptable Power System (UPS- for Telecom)
- ◆ EPS



### Constant Current Discharge (Amperes) at 25 °C (77°F)

F.V/Time	15min	20min	30min	45min	1h	2h	3h	4h	5h	6h	8h	10h	20h
1.85V/cell	251.5	226.5	187.6	150.4	125.4	77.8	59.3	48.5	41.3	36.1	28.9	24.1	12.9
1.80V/cell	285.8	252.3	201.3	158.2	131.1	81.3	62.3	50.7	43.0	37.7	30.1	25.0	13.3
1.75V/cell	314.0	271.9	213.1	166.4	136.8	84.5	64.3	52.4	44.4	38.6	30.7	25.3	13.4
1.70V/cell	335.3	290.9	223.6	172.6	141.6	87.9	66.3	53.6	45.1	39.3	31.3	25.6	13.6
1.65V/cell	353.3	305.3	234.6	180.2	146.7	90.8	67.8	54.7	46.1	40.0	31.7	25.9	13.7
1.60V/cell	370.3	316.5	242.6	185.0	150.2	92.5	69.0	55.5	46.8	40.5	32.2	26.3	13.8

### Constant Power Discharge (Watts) at 25 °C (77°F)

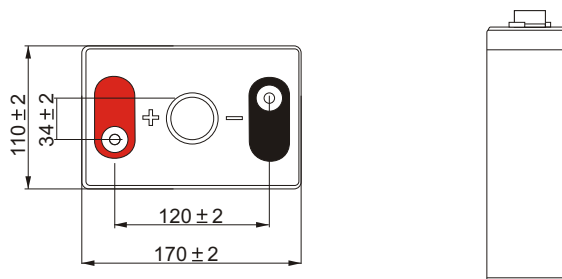
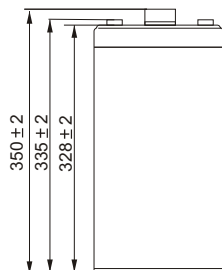
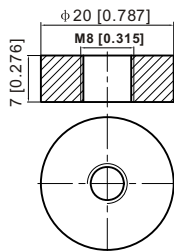
F.V/Time	15min	20min	30min	45min	1h	2h	3h	4h	5h	6h	8h	10h	20h
1.85V/cell	476.2	430.8	358.5	289.2	242.6	151.2	116.0	95.2	81.4	71.3	57.3	47.9	25.6
1.80V/cell	534.2	474.8	381.6	302.2	252.2	157.3	121.1	99.1	84.4	74.2	59.6	49.6	26.5
1.75V/cell	578.7	505.9	401.0	315.9	262.0	162.9	124.8	102.1	86.7	75.7	60.6	50.2	26.6
1.70V/cell	611.4	536.7	417.2	325.5	269.8	168.7	128.2	103.9	88.0	76.9	61.6	50.8	26.9
1.65V/cell	636.3	557.0	434.4	337.8	277.9	173.5	130.5	105.8	89.5	78.0	62.4	51.3	27.1
1.60V/cell	655.9	571.0	444.8	343.7	282.5	175.8	132.1	106.8	90.5	78.9	63.2	52.0	27.3



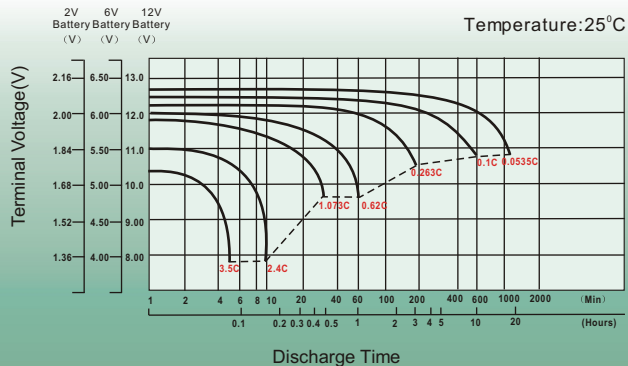
## Dimensions

### T11 Terminal

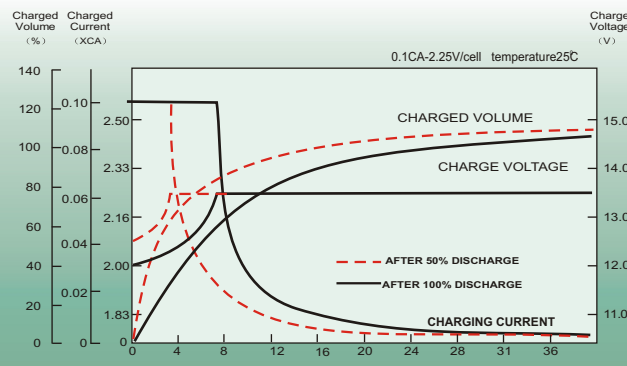
Unit: mm [inches]



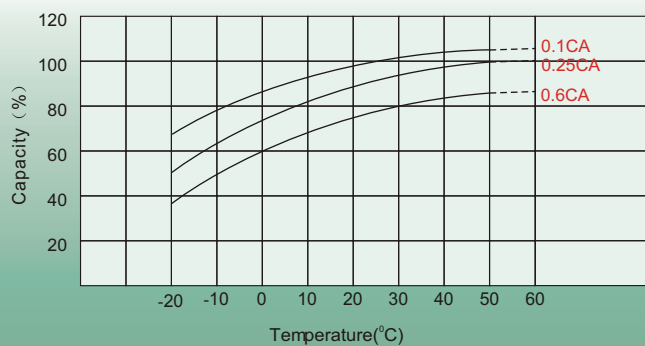
## Discharge Characteristics



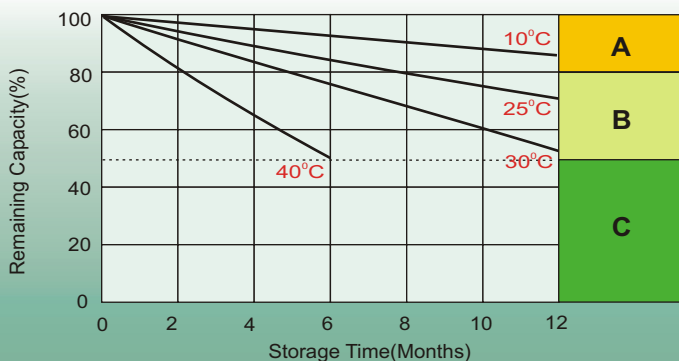
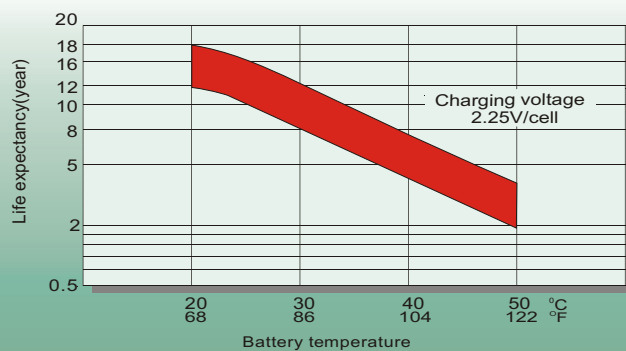
## Float Charging Characteristics



## Temperature Effects in Relation to Battery Capacity



## Effect of Temperature on Long Term Float Life



## Self Discharge Characteristics

- A** No supplementary charge required  
(Carry out supplementary charge before use if 100% capacity is required.)
- B** Supplementary charge required before use. Optional charging way as below:
  1. Charged for above 3 days at limited current 0.25CA and constant volatge 2.25V/cell.
  2. Charged for above 20hours at limited current 0.25CA and constant volatge 2.45V/cell.
  3. Charged for 8-10hours at limited current 0.05CA .
- C** Supplementary charge may often fail to recover the capacity.  
The battery should never be left standing till this is reached.

## Sales Office

### China sales office:

Add: 5th Floor, Xinbaohui Bldg., Nanhai Blvd.,  
Nanshan, Shenzhen, China. 518052  
Tel: +86-755-86036060 (100 lines)  
Fax: +86-755-26067269  
E-mail: export@leoch.com  
Http://www.leoch.com

### HongKong sales office:

Add: Workshop C, 33/F, TML Tower,  
No. 3 Hoi Shing Road, Tsuen Wan,  
New Territories, Hong Kong  
Tel: +852 35786666  
Fax: +852 21170016  
E-mail: sales.hk@leoch.com

### Singapore sales office:

Add: No. 1 Tech Park Crescent,  
Singapore 638131  
Tel: +65 68416629  
Fax: +65 68443210  
Email: sales.sg@leoch.com

### North America sales office:

Add: 19751 Descartes, Unit A,  
Foothill Ranch, CA 92610, USA  
Tel: 949-588-5853  
Fax: 949-588-5966  
E-mail: sales@leoch.us  
Http://www.leoch.com

### Europe sales office:

Add: 9B Wheatstone Court, Waterwells  
Business Park, Gloucester, GL2-2AQ,  
UK United Kingdom  
Tel: +44(0) 1452 729428 / 1452 729696  
Fax: +44 (0)1452-690125  
E-mail: Sales.Europe@leoch.com