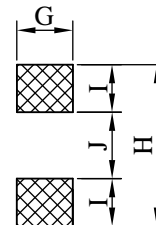
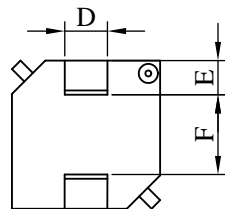
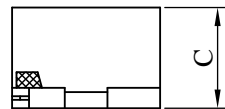
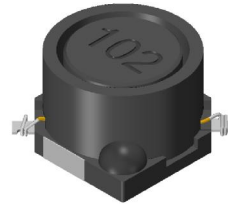
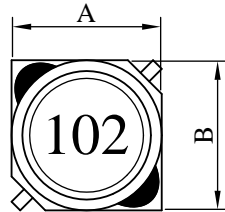


# SPECIFICATION FOR APPROVAL

REF. :

PROD. NAME	Shielded SMD Power Inductor	ABC'S DWG NO.	SS6038□□□□MV□-□□□		
		REV.	20190219-A	PAGE	1

## I . Configuration and dimensions :



( PCB Pattern Suggestion )

Unit : m/m

A	B	C	D	E	F	G	H	I	J
6.00 ±0.3	6.00 ±0.3	3.80 ±0.3	2.00 ±0.3	1.90 typ.	2.20 ref.	2.40 ref.	6.70 ref.	2.30 ref.	2.10 ref.

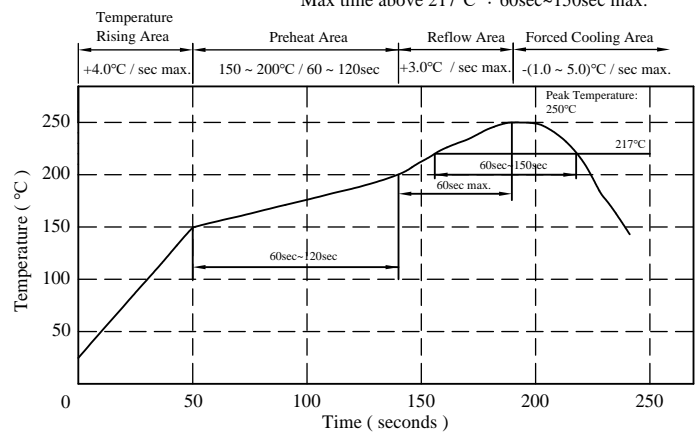
## II . Description :

- a . Ferrite drum core construction.
- b . Magnetically shielded.
- c . Enamelled copper wire : F class
- d . Product weight : 0.30g ( ref. )
- e . Moisture sensitivity Level 1
- f . Products comply with RoHS' requirements
- g . Halogen free

## III . General specification :

- a . Storage temp. : -40°C ----+125°C
- b . Operating temp. : -40°C----+125°C  
(Temp. rise included)
- c . Resistance to solder heat : 250°C.10 secs.

Peak Temp : 250°C max.  
Max. Peak Temp - 5°C : 30sec max.  
Max time above 217°C : 60sec~150sec max.



AR-001C

# SPECIFICATION FOR APPROVAL

REF. :

PROD. NAME	Shielded SMD Power Inductor	ABC'S DWG NO.	SS6038□□□MV□-□□□		
		REV.	20190219-A	PAGE	2

IV . Electrical characteristics :

DWG No.	Inductance (uH)	Test Freq. (Hz)	RDC (Ω) max.	Isat (A) max.	Irms (A) max.
SS60381R0MV□-□□□	1.0±20%	1k/0.5V	0.018	4.00	3.70
SS60381R5MV□-□□□	1.5±20%	1k/0.5V	0.020	3.40	3.40
SS60382R2MV□-□□□	2.2±20%	1k/0.5V	0.030	2.65	2.70
SS60383R3MV□-□□□	3.3±20%	1k/0.5V	0.033	2.20	2.50
SS60384R7MV□-□□□	4.7±20%	1k/0.5V	0.040	1.90	2.20
SS60386R8MV□-□□□	6.8±20%	1k/0.5V	0.050	1.60	2.00
SS6038100MV□-□□□	10.0±20%	1k/0.5V	0.065	1.30	1.80
SS6038150MV□-□□□	15.0±20%	1k/0.5V	0.100	1.10	1.15
SS6038220MV□-□□□	22.0±20%	1k/0.5V	0.150	0.85	1.00
SS6038330MV□-□□□	33.0±20%	1k/0.5V	0.220	0.65	0.85
SS6038470MV□-□□□	47.0±20%	1k/0.5V	0.300	0.55	0.70
SS6038680MV□-□□□	68.0±20%	1k/0.5V	0.390	0.45	0.60
SS6038101MV□-□□□	100.0±20%	1k/0.5V	0.570	0.38	0.46
SS6038151MV□-□□□	150.0±20%	1k/0.5V	0.900	0.32	0.34
SS6038221MV□-□□□	220.0±20%	1k/0.5V	1.250	0.27	0.29
SS6038331MV□-□□□	330.0±20%	1k/0.5V	1.850	0.22	0.23
SS6038471MV□-□□□	470.0±20%	1k/0.5V	2.700	0.19	0.20
SS6038681MV□-□□□	680.0±20%	1k/0.5V	3.800	0.15	0.17
SS6038102MV□-□□□	1000.0±20%	1k/0.5V	5.800	0.13	0.14

- 1). Electrical specifications at 25°C
- 2). Isat base on  $\Delta L/L0A=25\%$  max. (Approximately transient current)
- 3). Irms base on Temp. rise 40°C max.
- 4). Impulse winding Test : 400V / 1us (Model 7720)

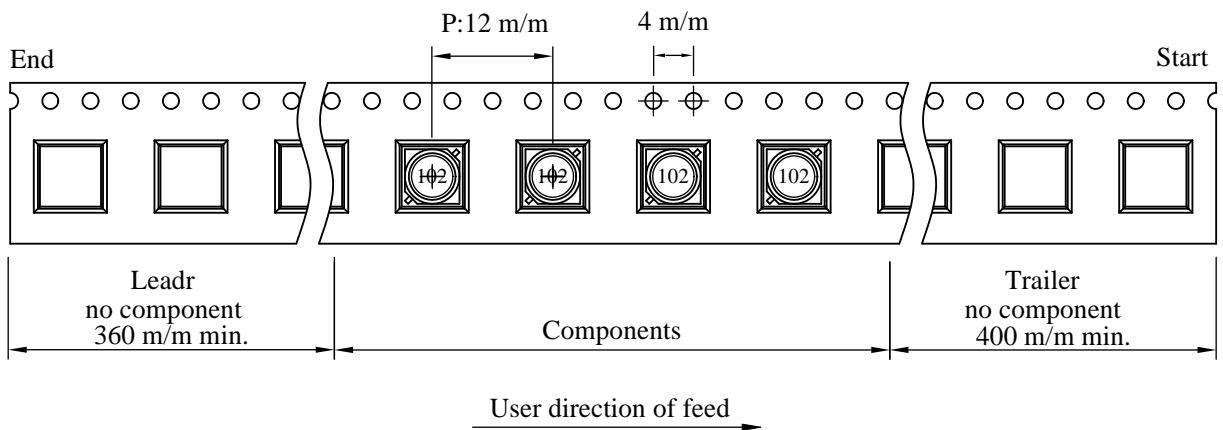
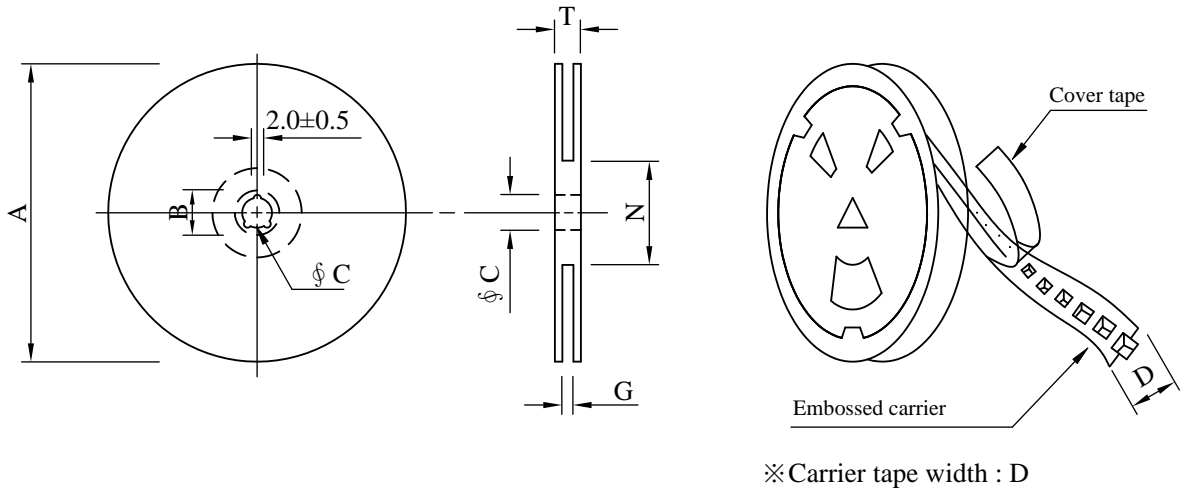
# SPECIFICATION FOR APPROVAL

REF. :

PROD. NAME	Shielded SMD Power Inductor	ABC'S DWG NO.	SS6038□□□MV□-□□□		
		REV.	20190219-A	PAGE	3

**V . Packaging information :**

( 1 ) Configuration



( 2 ) Dimensions

Unit:m/m

Style	A	B	C	D	G	N	T
13 - 16	330	21±0.8	13±0.5	16	18 <sup>+0</sup>	50 <sup>-0</sup>	22.4

( 3 ) Q'TY & G.W. Per package

Code	Inner : Reel			Outer : Carton		
	Q'TY (PCS)	G.W. (gw)	Style	Q'TY (pcs)	G.W. (Kg)	Size (cm)
B	1,000	800	13 - 16	6,000	6.1	38 x 37 x 22



# SPECIFICATION FOR APPROVAL

REF. :

PROD. NAME	Shielded SMD Power Inductor	ABC'S DWG NO.	SS6038□□□MV□-□□□		
		REV.	20190219-A	PAGE	5

## VII . Reliability test :

Item	Reference documents	Test Condition	Test Specification
1.High Temperature Exposure	MIL-STD-202 Method 108	1.Temperature: 125±2°C 2.Time:96±2 hours.	1.No mechanical or electrical damage. 2.Inductance shall not change more than ±20%.
2.Temperature Cycling	JESD22-A 104	1.Temperature: -40°C ~ +125°C 2.Number of cycle:100 cycle 3.Dwell time:30 minutes	1.No mechanical or electrical damage. 2.Inductance shall not change more than ±20%.
3.Biased Humidity Test	MIL-STD-202 Method 103	1.Temperature : 85±2 °C 2.Humidity: 85% RH. 3.Time:96±2 Hours	1.No mechanical or electrical damage. 2.Inductance shall not change more than ±20%.
4.Operational Life	JESD22-A 108	1.Temperature: 125°C(Temp. rise included) 2.Time:96±2 hours. 3.Rated current	1.No mechanical or electrical damage. 2.Inductance shall not change more than ±20%.
5.External Visual	JESD22-B 101 & MIL-STD-883 Method 2009	Inspect product constructions, marking and workmanship.	1.No pollution on the surface of products. 2.Clear marking. 3.No crack.
6.Physical Dimensions	JESD22-B 100	Verify physical dimensions to the applicable product detail specification.	Per product specification standard
7.Resistance to solvents	MIL-STD-202 Method 215	Immerse into solvent for 3±0.5 minutes & brush 10 times for 3 cycles.	1.No body change in appearance. 2.No marking blurred. 3.Inductance shall not change more than ±20%.
8.Vibration Test	MIL-STD-202 Method 204	1.Frequency and Amplitud : 10-2000-10 Hz, 1.5 mm. 2.Direction:X, Y, Z 3.Test duration:2 hours for each direction, 6 hours in total.	1.No mechanical or electrical damage. 2.Inductance shall not change more than ±20%.
9.Resistance To Soldering Heat Test	MIL-STD-202 Method 210 & J-STD020D.1	1.Highest temperature : 250±5°C. 2.Time ( temp.≥ 217°C ) : 60~150 Second. 3.IR reflow times : 3 times.	1.No mechanical or electrical damage. 2.Inductance shall not change more than ±20%.
10.Saturation Current	JIS C 6436 & User SPEC.	1.Applied rated current for 5 second. 2.Saturation current	Inductance shall not drop more than 25% max.
11.Over load	JIS C 6436 & User SPEC.	1.Applied one and half rated current for a period of 5 minutes. 2.Rated current	No electrical or mechanical damage
12.Temperature Rise Current	JIS C 6436 & User SPEC.	1.Applied rated current for 10 minutes. 2.Temperature measure by digital surface thermometer. 3.Irms current	Surface temperature rise is less than 40°C max.
13.Solderability Test	J-STD-002 & JESD22-B 102	1.Baking in pre-testing : 150±5°C / 16Hours±30 min. 2.Peak temperature : 240±5°C 3.Time ( temp.≥ 217°C ) : 60~150 second. 4.IR reflow times : 1 times.	More than 95% soldering coverage min on terminations.
14.Electrical Characteriazation	MIL-STD-202 Method 304 & User SPEC.	1.Operating temperature : -40°C~125°C 2.Room temperature : 25°C.	1.No mechanical or electrical damage. 2.Inductance shall not change more than ±20%.
15.Drop	CNS-C6354 & GB/T 2423.8	1.Products shall be mounted on SPEC. PCB and dropped down from a height of 1m 2.Drop total time : 6 time (Every side of sample drop 2 time)	1. Adhesion on PCB shall be enough. 2. Product appearance shall not break. 3. No electrical damage.
16.Terminal Strength Test	IEC 60068-2-21	1.Apply push force to samples mounted on PCB. 2.Force of 1.8 kg for 60±1 seconds.	After test, inductors shall be no mechanical damage.

AR-001C

# SPECIFICATION FOR APPROVAL

REF. :

PROD. NAME	Shielded SMD Power Inductor	ABC'S DWG NO.	SS6038□□□MV□-□□□		
		REV.	20190219-A	PAGE	6

VIII . Change history :

DATE/REV.	DISCRIPTION	DRAWN	CHECKED	APPROVED
20190219-A	Released	Jin Jie	Jian Li	Lock

AR-001C