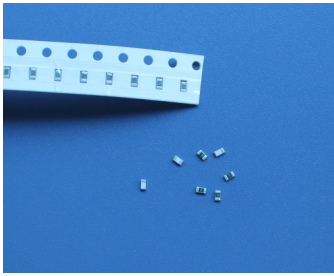


063 Chip Fuse



Main Characteristics

Chip fuse; Time-Lag (T)

Standard

UL248-14

Materials

Substrate: Ceramic
Termination: Silver over-plated with nickel and tin

Operating Temperature

-55°C to +150°C

Storage Conditions

+10°C to +60°C
Relative humidity: ≤75% yearly average
Without dew, maximum 30 days at 95%

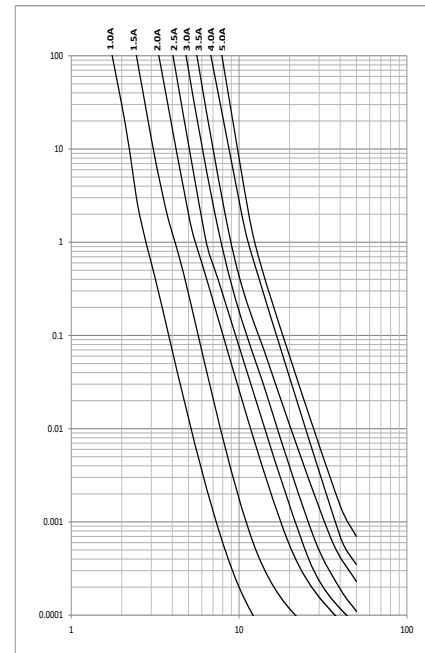
Vibration Resistance

24 cycles at 15 min. each (60068-6)
10-60Hz at 0.75mm amplitude
60-2000Hz at 10g acceleration

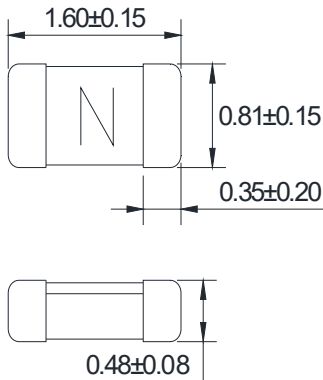
Soldering Parameters

260°C. ≤10 sec (Wave Soldering)
350°C. ≤3 sec (Hand Soldering)
Soldering Peak:
260°C. 10 sec.
280°C. 5 sec. (IEC 60068-20)

Average Time Current(I-T Curve)



Dimensions (unit: mm)



Time vs Current Characteristics: UL248-14

Rated Current	100%	200%	250%
1A~5A	>4h	1s~60s	<5s



Electrical Characteristics at 25°C

Amp Code	Rated Current	Rated Voltage	Typical Voltage Drop(mV)	Breaking Capacity	Typical Melting I ² T (A ² s)	Typical Cold Resistance (mΩ)	Alpha Mark	Approvals
								cURus
1100	1.00A	32VDC	325	50A@32VDC	0.015	248	H	•
1150	1.50A		255		0.05	145	K	•
1200	2.00A		150		0.125	74	N	•
1250	2.50A		135		0.14	54	O	•
1300	3.00A		120		0.35	35	P	•
1350	3.50A		125		0.62	27.5	R	•
1400	4.00A		110		0.81	20.5	S	•
1500	5.00A		103		2.0	12.75	T	•

- DC Interrupting Rating (Measured at rated voltage, time constant of less than 50 microseconds, battery source)
- DC Cold Resistance are measured at <10% of rated current in ambient temperature of 25degrees
- Typical Pre-arcing I²t are measured at 10In Current

Ordering Information

Series	Amp Code	Supplementary Code	Qty
063			



Sales Contact
sls01@betterfuse.com

Technical Support
Kenny@betterfuse.com

National High-tech Enterprise
SC 32C National Technical Committee Member of China
Intertek ISO 9001 Certificated Company
Intertek ISO 14001 Certificated Company
Intertek QC 080000 Certificated Company
NOA IATF 16949 Certificated Company

国家高新技术企业
SC 32C 国内专家组成员单位
ISO 9001 认证企业
ISO 14001 认证企业
QC 080000 认证企业
IATF 16949 认证体系