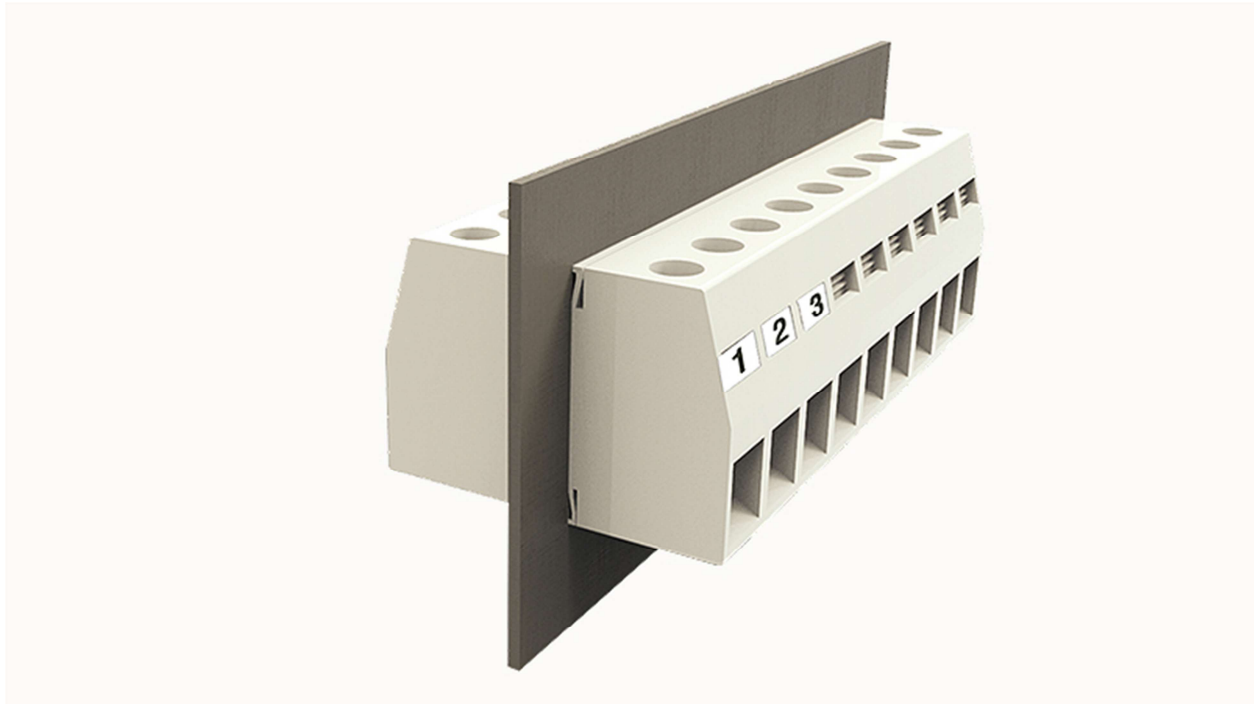


DGH50

Through-wall terminal blocks, Rated current: 150A. Rated voltage (III/2) : 1000V, Width: 18.8mm, Color: gray, Contact surface : Tin



Connection capacity

Conductor cross section solid	16~50mm ²
Conductor cross section flexible	16~50mm ²
AWG	6~2/0AWG
Strip length	24mm

Electrical parameters UL

Rated voltage (B)	600V
Rated voltage (C)	600V
Rated voltage (D)	600V
Rated current (B)	170A
Rated current (D)	5A
Rated current (C)	170A

Electrical parameters IEC

Rated current(III/3)	690V
Rated current	500V
	150A
Rated current(III/2)	1000V

Rated current(II/2)	1000V
Rated surge voltage(III/3)	8KV
Rated surge voltage(III/2)	8KV
Rated surge voltage(II/2)	8KV

Item properties

Type of installation	panel
Connection method	Screw connection
Screwdriver	Slotted screwdriver
screw thread	M6
Pitch	18.8mm
Number of potentials	1
Pluggable or not	Yes

Number of rows	1
----------------	---

Material data

Environmental items	Compliant with REACH/R
Contact material	copper
Contact point metal surface	tin-plated
Contact zone metal surface	tin-plated
Insulation Materials	PA66
Insulating material group	I
Flammability rating	UL94V-0

Mechanical tests

Test Specification	IEC60947/UL1059
--------------------	-----------------

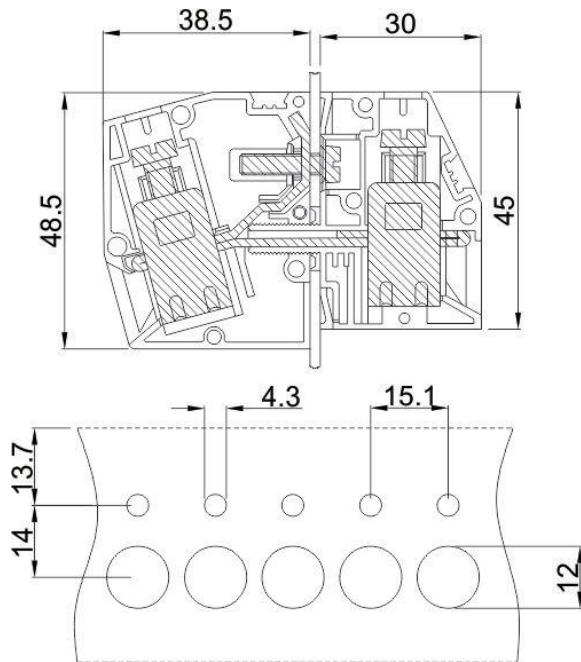
Environmental data

Ambient temperature (operation)	-40°C~105°C
---------------------------------	-------------



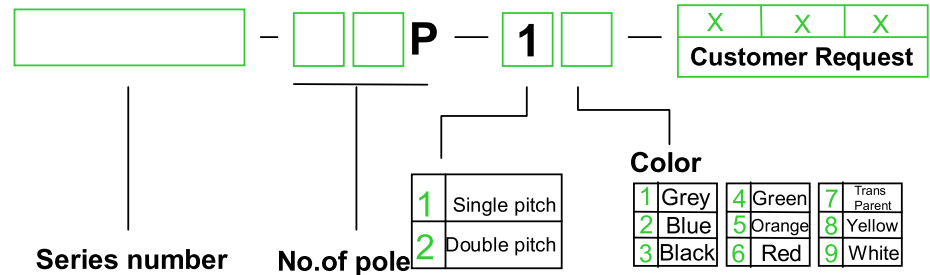
DEGSON ELECTRONICS CO., LTD.

Product Specification



APPROVAL		
Electrical		
Standard	UL	IEC
Rated voltage	600V	690V
Rated current	150A	150A
Wire range	6-1/0AWG	16-50mm ²
Rated impulse voltage	6KV	
Mechanical		
Torque	2.5Nm(22.15Lb-In)	
Ambient temperature	-40°C~+105 °C	
Strip length	24mm	
Material		
Housing	PA66,UL94V-0	
Screws	M6,Brass, Ni plated	
Contact	Copper, Tin plated	
Cage	Steel, Cr3+Zn plated	

HOW TO ORDER :



 mm (INCH)	 DEGSON ELECTRONICS CO., LTD.
 THROANGLE PROJECTION	NAME DGH50